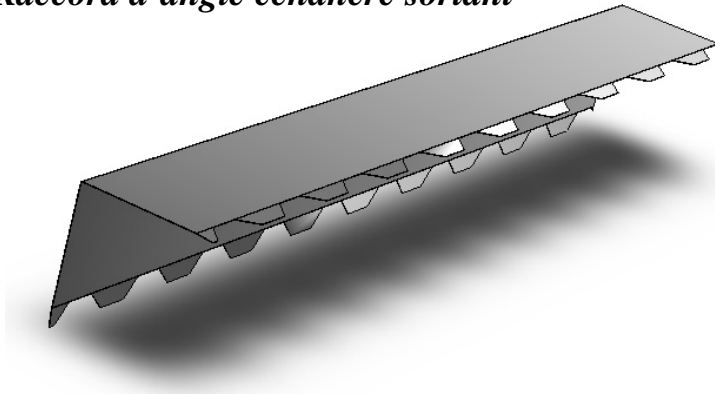
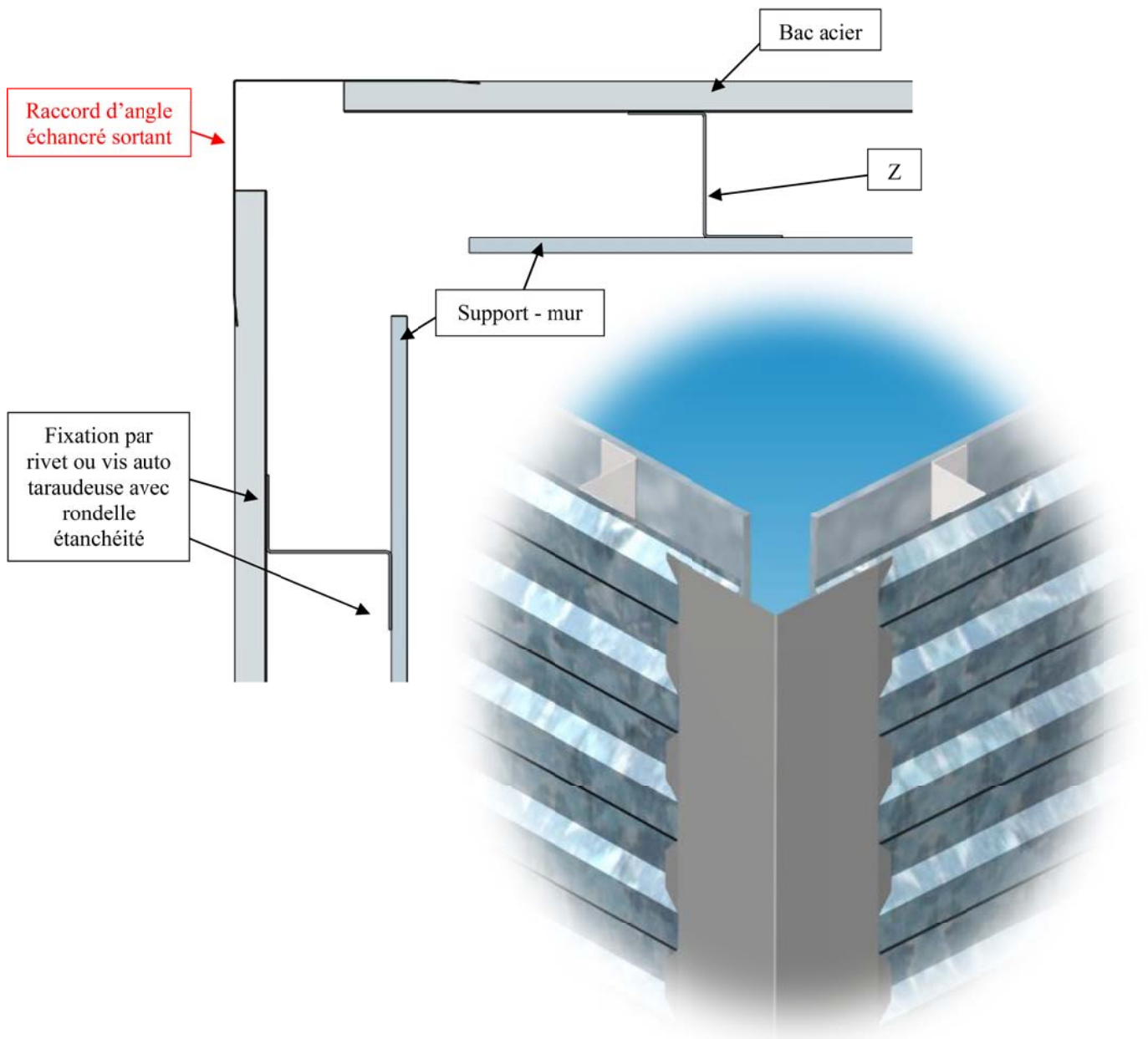


II.3) Raccord d'angle

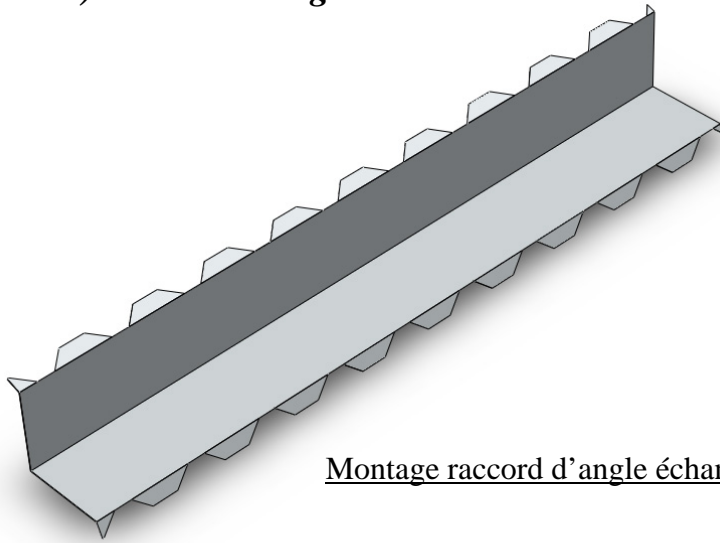
II.3.a) *Raccord d'angle échancré sortant*



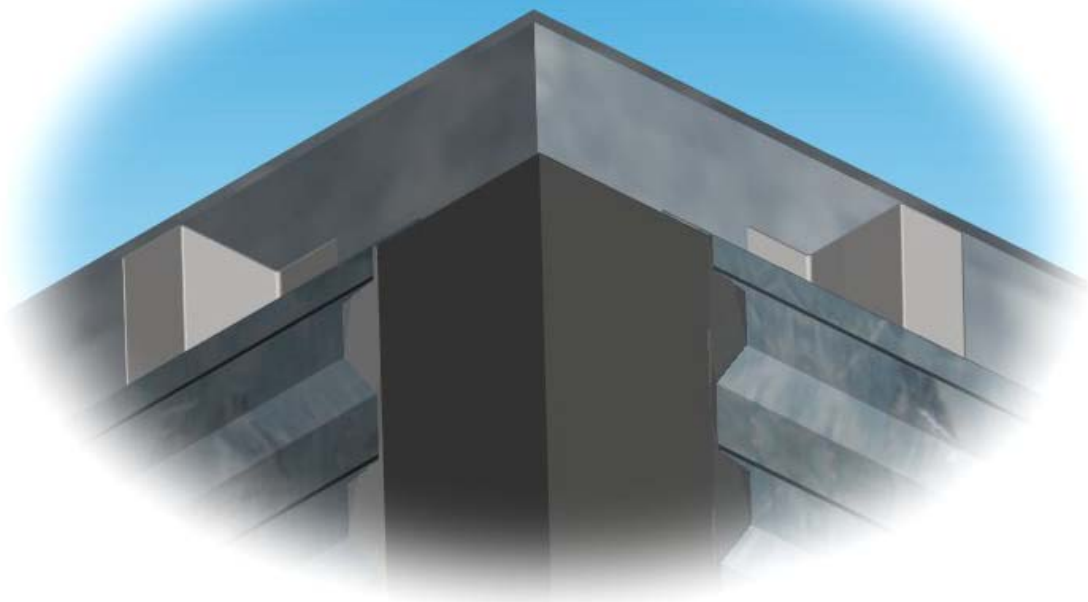
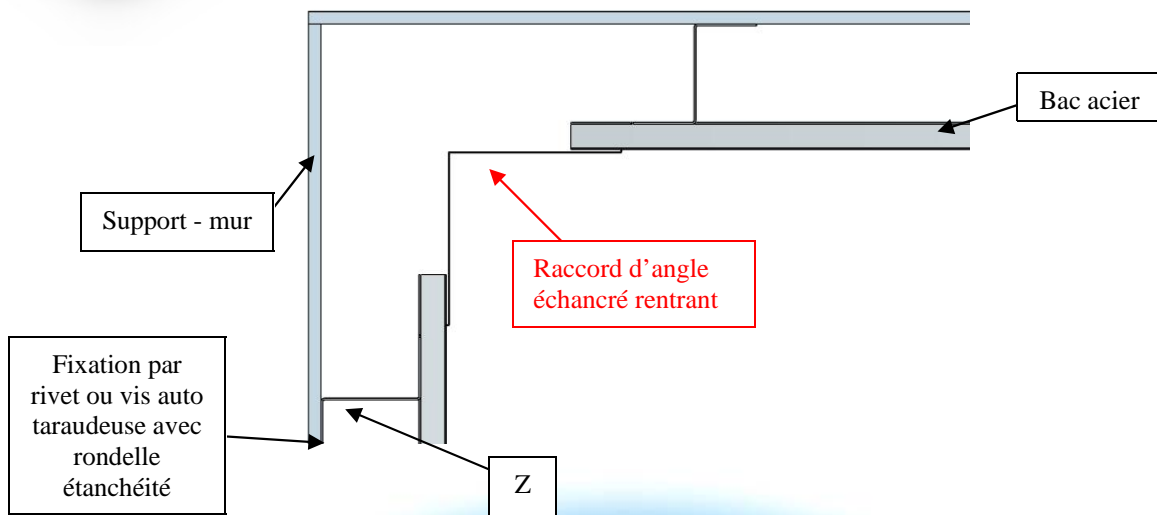
Montage raccord d'angle échancré sortant



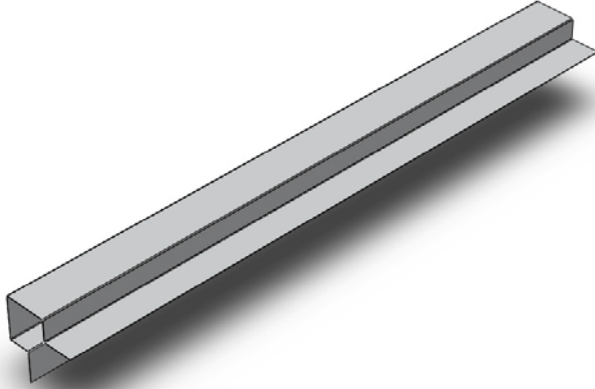
II.3.b) Raccord d'angle échancré rentrant



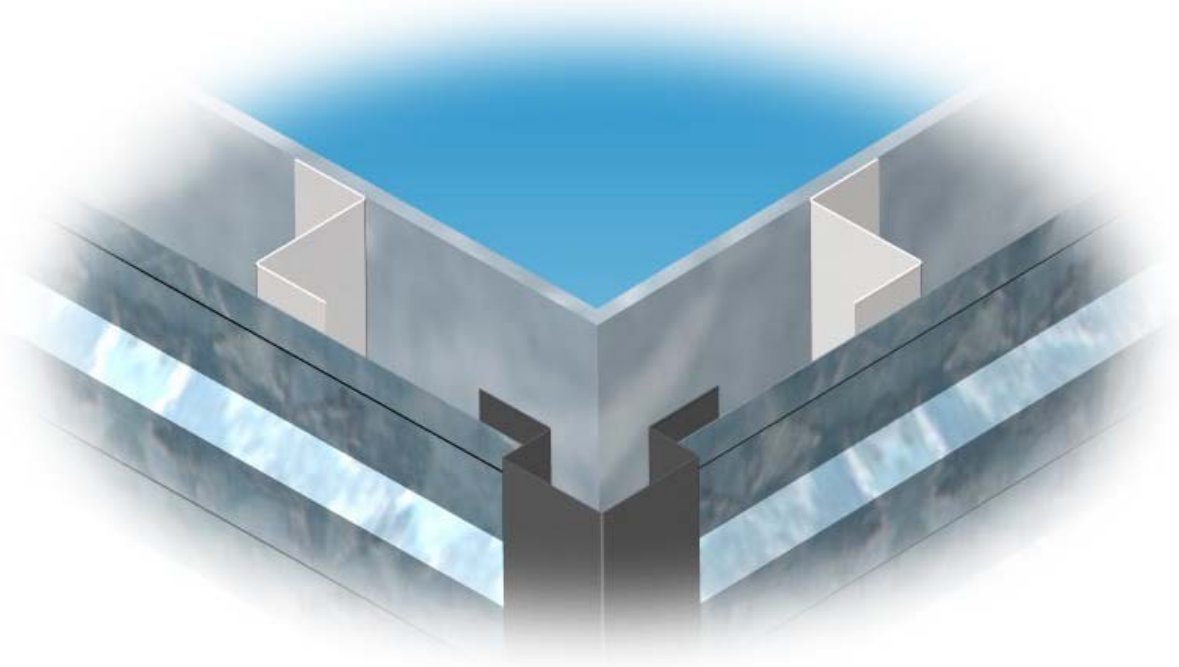
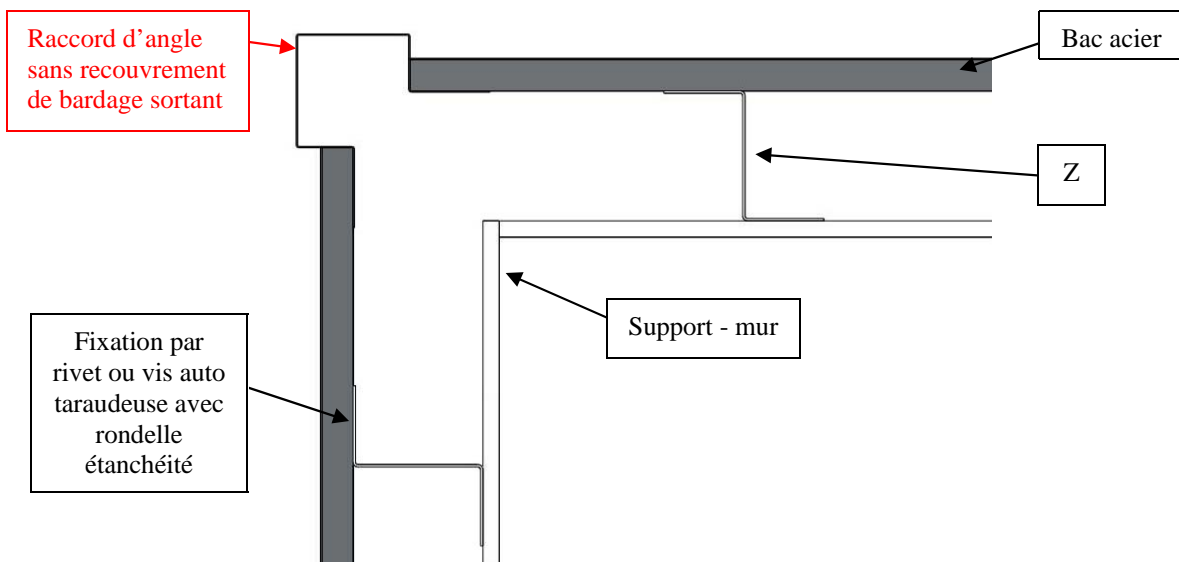
Montage raccord d'angle échancré rentrant



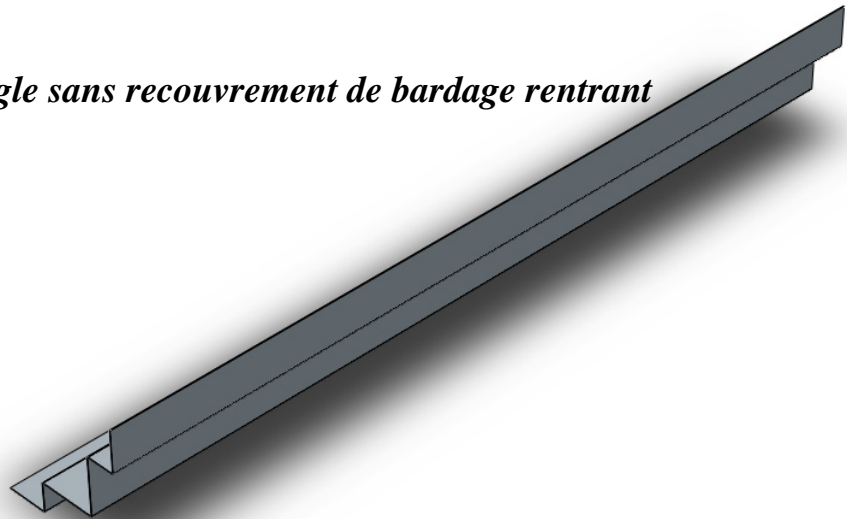
II.3.c) Raccord d'angle sans recouvrement de bardage sortant



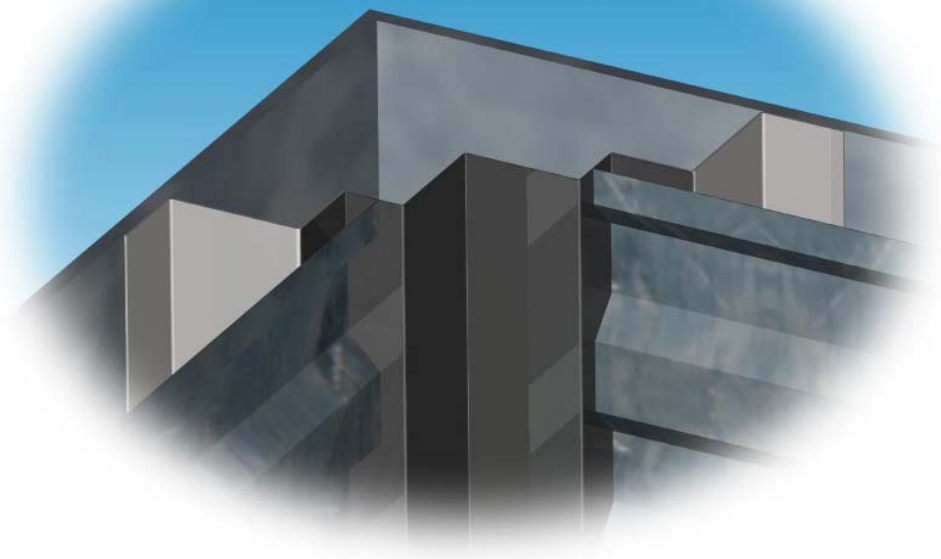
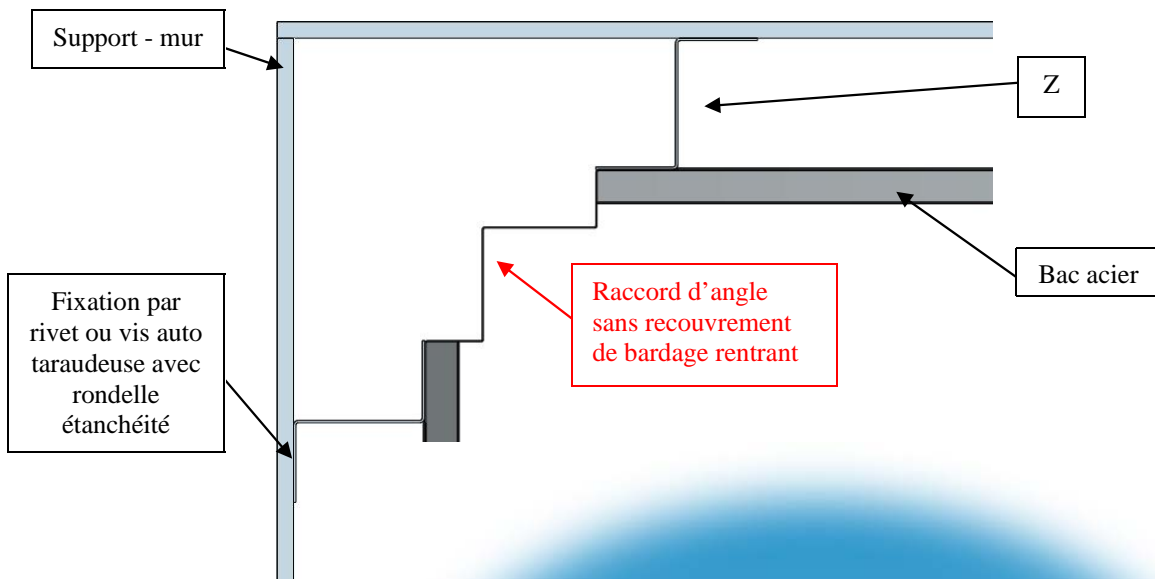
Montage raccord d'angle sans recouvrement de bardage sortant



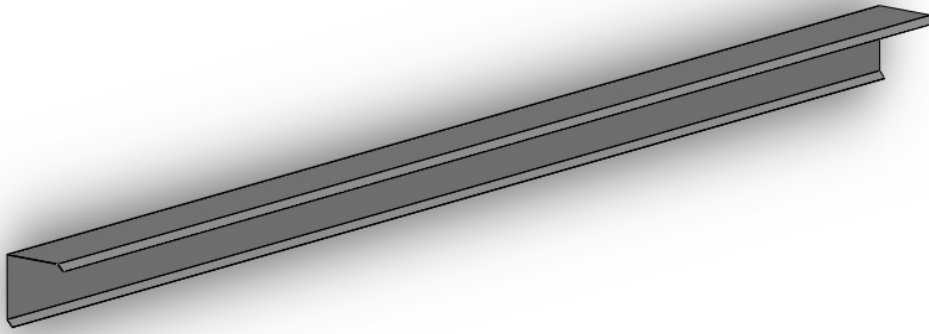
II.3.e) Raccord d'angle sans recouvrement de bardage rentrant



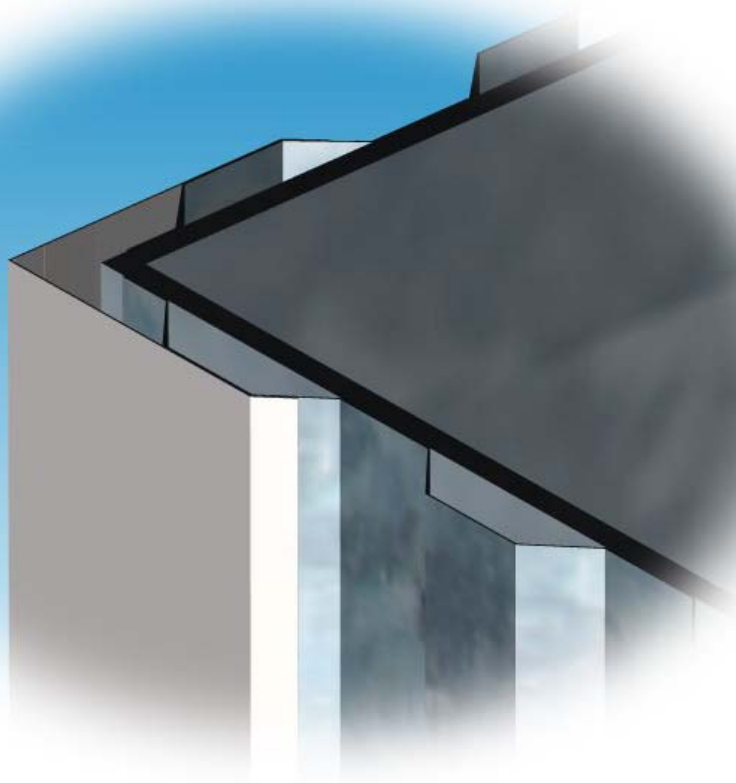
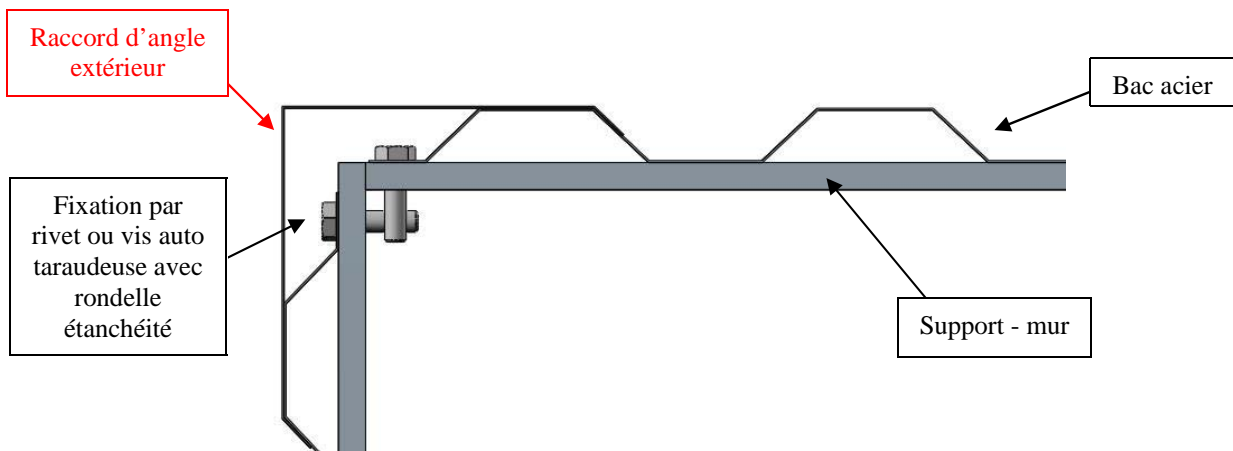
Montage raccord d'angle sans recouvrement de bardage rentrant



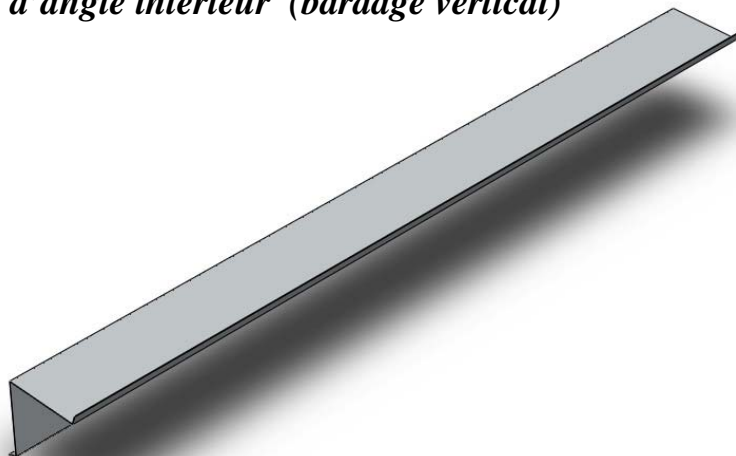
II.3.f) Raccord d'angle extérieur (bardage vertical)



Montage raccord d'angle extérieur



II.3.g) Raccord d'angle intérieur (bardage vertical)



Montage raccord d'angle intérieur

